

Pressens



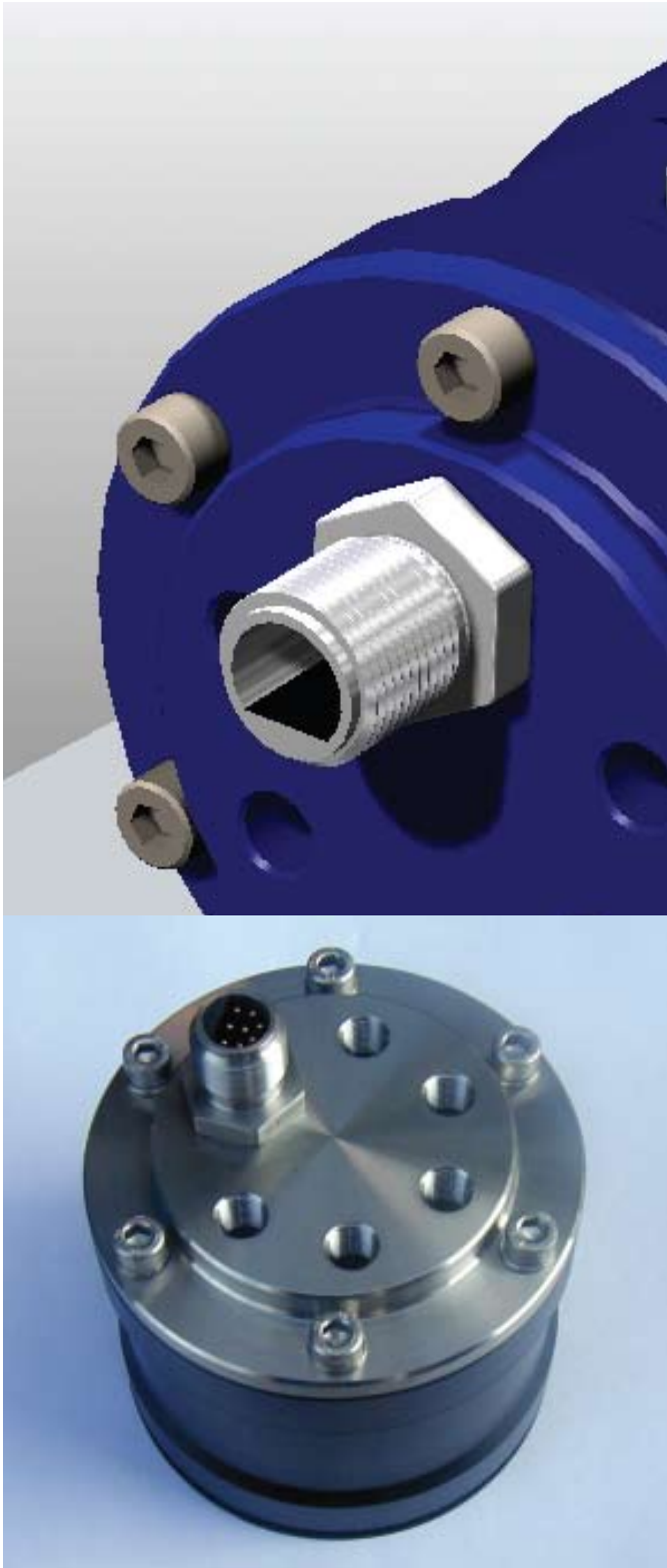
Intervention systems, ROVs and trenchers are often expanded or upgraded, requiring more functions and more sensors.

The Pressens pressure sensor bottle offers 5 extra pressure sensors in the smallest possible volume, and with the simplest possible electrical interface.

The sensor bottle is pressure compensated with its own, integrated compensator membrane, and the 5 pressure sensors will measure relative to ambient pressure. The pressure sensors can measure water or oil pressures, and can be used in a variety of applications, including monitoring of hydraulic functions, water pumps, and load on cylinders.

All hydraulic connections and the electrical connector are placed in one end. Each pressure sensor is available through a 1/4" NPT port, and the electrical signals on a Burton 5507-1508.

Pressens



Technical data:

Wiring:

• Pin 1	+24VDC	(1-5V or 4-20mA)
• Pin 2	0VDC	(1-5V or 4-20mA)
• Pin 3	Output 1	(1-5V or 4-20mA)
• Pin 4	Output 2	(1-5V or 4-20mA)
• Pin 5	Output 3	(1-5V or 4-20mA)
• Pin 6	Output 4	(1-5V or 4-20mA)
• Pin 7	Output 5	(1-5V or 4-20mA)
• Pin 8	NC	(1-5V or 4-20mA)
• Connector:	Burton 5507-1508	

Sensors:

- Accuracy: $\pm 1\%$ of full scaled (combined line activity, hysteresis and repeatability)
- Pressure range of sensors: 0-7, 17, 35, 70, 175, 350, 700 bar
- Pressure overload: 2X rated pressure
- Burst pressure: 5X or 20000 PSI whichever is less

Mechanical:

- Material: POM / AISI 316
- Size: $\varnothing 128 \times 110\text{mm}$ Lg + Connectors and fittings
- Weight: approx. 4kg in air
- Depth rating: >5000m (Pressure compensated)

Note: technical specifications are subject to change without notice. We accept no liability for any inaccuracy or printing errors.

INNOVA TECHNOLOGY

